



6" Burrell Single Cylinder Agricultural Engine



Catalogue

WWW.EKPSUPPLIES.COM

Tel: 01598 710 892

E: sales@ekpsupplies.com



VAT

All prices are available on a separate price list and exclude VAT at the current rate.

Availability

Whilst we make every effort to maintain prices and specifications, we reserve the right to make changes in availability, price and specification without notice.

Drawings

Whilst we believe our drawings to be accurate, we cannot be held responsible for any inaccuracies.

Payment

We accept most major credit / debit cards, we can also accept payments via bank transfers and PayPal.

Returns Policy

If a casting is proved to be faulty, we will exchange it free of charge upon return of the faulty casting; however, we are not responsible for any carriage charges or machining costs.

Carriage

For carriage charges, please contact us and we will gladly work out the cost for you.

Trade Description Act

Every care has been taken to describe our goods correctly. Any errors are unintentional and will be amended if you advise us accordingly.

Order

Orders can be placed by the following methods

Phone 01598 710 892

E-Mail sales@ekpsupplies.com

Website www.ekpsupplies.com



6" Burrell Single Cylinder Agricultural Engine

Designed and built by ourselves based on the early Burrell traction engine with single drive and differential on the rear axle but with the added front spring for use on the road or field.

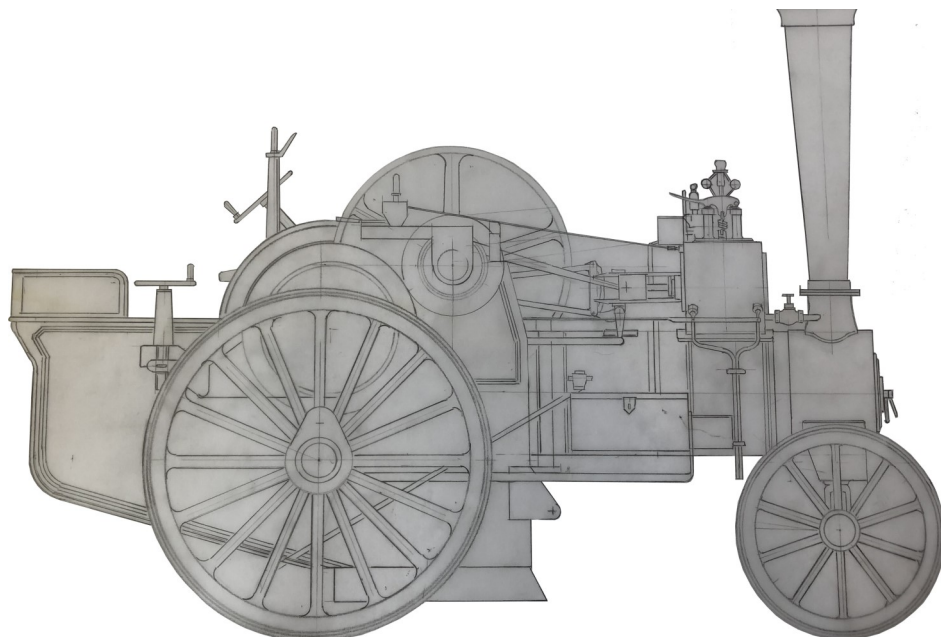
Specifications

Length:	96"
Height:	66"
Width:	46"
Weight:	1.5 Ton (Approx.)
Cylinder Bore:	4 1/4"
Working Pressure:	125psi
Flywheel Diameter:	25 3/4"
Rear Wheel Diameter:	34 1/2"
Boiler Diameter:	12 3/4"
Boiler Length:	48"



Drawings

Drawing	Reference Code
Full Set Drawings - 18 Sheets	6ADSET
General Arrangement	6TD1
Front Wheels / Axle	6TD2
Perch Bracket, Smokebox and Chimney	6TD3
Horn Plates / Steering	6TD4
Main Bearings and Crankshaft Gears	6TD5
Axle / Second Shaft Tubes and Second Shaft Gears	6TD6
Water Pump / Gear Change Bracket	6TD7
Tender	6TD8
Rear Wheels	6TD9
Cylinder	6TD10
Brake / Piston and Cylinder End Covers	6TD11
Ash Pan, Grate and Forward / Reverse Lever	6TD12
Safety Valves and Regulator	6TD13
Boiler	6TD14
Boiler	6TD14A
Differential	6TD15
Motion-Forward and Reverse	6TD16
Crank Shaft and Eccentrics	6TD17
Flywheel and Manifold	6TD18



Castings and Materials

Unit	Description	Material	Code
Pair	Front Wheel Rims (Welded)	Steel	6A1
Set of 20	Laser Cut Front Spokes	Steel	6A2
One	Front Axle Material	Steel	6A3
One	Front Axle Pivot (Fork) Material	Steel	6A4
Pair	Front Hubs	Steel / Cast Iron	6A5
Pair	Front Hub Outer Cover	Steel / Cast Iron	6A6
Pair	Front Hub Inner Cover	Steel / Cast Iron	6A7
Pair	Front Hub Caps	Brass / Bronze	6A8
One	Smokebox Tube	Steel	6A9
One	Chimney (Rolled)	Steel	6A10
One	Smokebox Ring	Cast Iron	6A11
One	Smokebox Door	Cast Iron	6A12
One	Smokebox Door Name Ring	Bronze	6A13
One	Steering Shaft Material	Steel	6A14
Set	Steering Shaft Bearing and Housing Material	Steel / Bronze	6A15
Pair	Fully Machined Worm and Wheel	Steel / Cast Iron	6A16
Pair	Laser Cut Horn Plates and Steering Brackets	Steel	6A17
One	Spun Chimney Top	Brass / Copper	6A18
One	Chimney Base to Smokebox	Cast Iron	6A19
One	Chimney Base Ring to Chimney	Cast Iron	6A20
One	Perch Bracket	Cast Iron	6A21
One	Flywheel	Cast Iron	6A22
Pair	Rear Wheel Rims With Tee-Sections	Steel	6A23
Pair	Rear Wheels Rolled and Welded	Steel	6A24
Set of 32	Rear Wheel Spokes (Laser Cut)	Steel	6A25
Pair	Rear Wheel Hubs	Cast Iron	6A26
Four	Rear Hub Inner Plate and Name Plate	Cast Iron	6A27
One	Right Side Axle to Wheel Driver	Cast Iron	6A28
Pair	Rear Hub Caps	Bronze	6A29
One	Rear Axle Tube	Cast Iron	6A30
Pair	Rear Axle Tube Bearing	Bronze	6A31
One	Second Shaft Tube	Cast Iron	6A32
Pair	Second Shaft Tube Bearing	Bronze	6A33
Pair	Laser Cut Spectacle Plates	Steel	6A34
One	Brake Wheel	Aluminium	6A35
One	Brake Bracket Base	Cast Iron	6A36

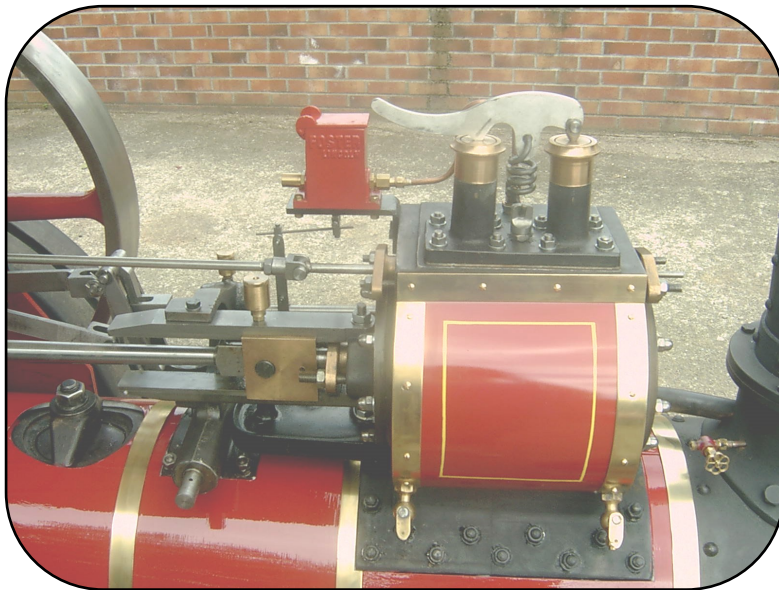
Castings and Materials

Unit	Description	Material	Code
One	Brake Bracket Top	Cast Iron	6A37
Pair	Cylinder and Base (Saddle)	Cast Iron	6A38
One	Cylinder Liner	Solid Cast Iron	6A39
One	Piston Material	Cast Iron	6A40
One	Slide Valve Cover	Cast Iron	6A41
One	Slide Valve	Bronze	6A42
One	Slide Valve Carrier	Bronze	6A43
One	Cylinder End Plate Front	Cast Iron	6A44
One	Cylinder End Plate Rear	Cast Iron	6A45
One	Cylinder Drip Tray	Cast Iron	6A46
One	Cylinder Piston Rod Gland	Bronze	6A47
One	Cylinder Piston Rod Material	Stainless Steel	6A48
Pair	Cylinder Regulator Gland	Bronze	6A49
One	Slide Valve Rod Gland	Bronze	6A50
One	Crankshaft	SG Iron	6A51
Pair	Crankshaft Main Bearing	Bronze	6A52
Pair	Crankshaft Main Bearing Right Side, Top and Bottom	Cast Iron	6A53
Pair	Crankshaft Main Bearing Left Side, Top and Bottom	Cast Iron	6A54
One	Big End Bearing	Bronze	6A55
One	Crankshaft Gear Fast	Cast Iron	6A56
One	Crankshaft Gear Slow	Cast Iron	6A57
Set of 3	Eccentric Outer	Cast Iron	6A58
Set of 3	Eccentric Inner	Steel	6A59
One	Gear Change Bracket	Cast Iron	6A60
One	Gear Selector Fast	Cast Iron	6A61
One	Gear Selector Slow	Cast Iron	6A62
One	Water Pump	Bronze	6A63
One	Water Pump Gland / Top	Bronze	6A64
Pair	Water Pump Balls	Stainless Steel	6A65
Pair	Tender Sides	Steel	6A66
One	Tender Bottom Plate	Steel	6A67
One	Tender Top Step	Cast Iron	6A68
One	Tender Bottom Step	Cast Iron	6A69
One	Steering Wheel	Aluminium	6A70
One	Steering Bracket Top	Cast Iron	6A71

Castings and Materials

Unit	Description	Material	Code
One	Regulator Bracket	Cast Iron	6A72
One	Steam Manifold	Bronze	6A73
One	Safety Valve Body	Bronze	6A74
One	Way Shaft	Cast Iron	6A75
One	Crosshead	Bronze	6A76
One	Safety Valve Spring	Steel	6A77
One	Lifting Link Right	Cast Iron	6A78
One	Lifting Link Left	Cast Iron	6A79
One	Brake Drum and Second Shaft Gear Slow	Cast Iron	6A80
One	Final Drive and Differential	Cast Iron	6A81
Pair	Differential Pinions	Cast Iron	6A82
One	Differential Inner Bevel	Cast Iron	6A83
One	Differential Outer Bevel	Cast Iron	6A84
One	Second Shaft Gear Fast	Cast Iron	6A85
One	Second Shaft Gear Small (No 5)	Cast Iron	6A86
One	Forward / Reverse Lever Bracket Laser Cut	Steel	6A87
One	Connecting Rod Material	Steel	6A88
One	Stevenson's Expansion Link Machined	Steel	6A89
One	Manhole Bridge Laser Cut	Steel	6A90
Pair	Slidebar Material	Steel	6A91
One	Rear Axle Material	EN8 Steel	6A92
One	Brake Band Material	Steel	6A93
One	Washout Boiler Nameplate	Bronze	6A94
One	Steam Valve Handwheel	Bronze	6A95
Pair	Tender Straps	Steel	6A96
One	Cylinder Cover Name Plate	Bronze	6A97
One	Check Valves	Bronze	6A98
One	Lubricator Box and Lid	Bronze	6A99

Detailed Image Gallery



6" Safety Valves and Cylinder Block

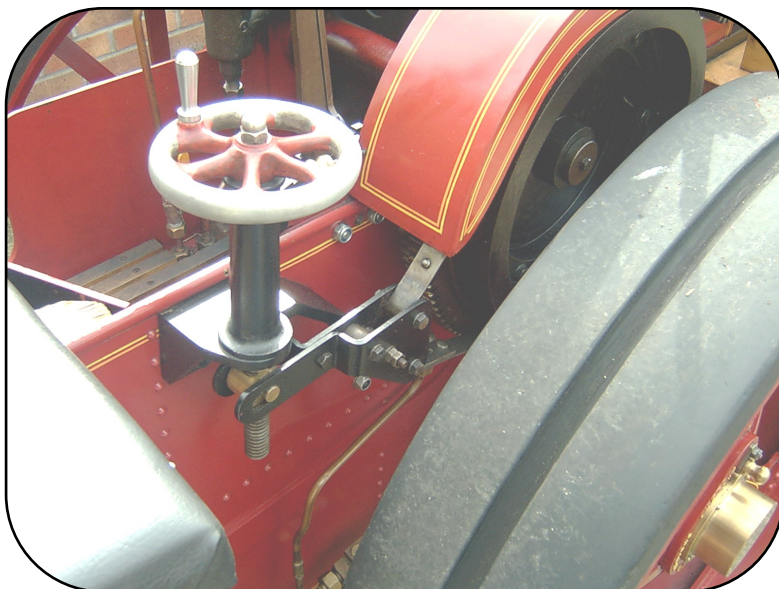
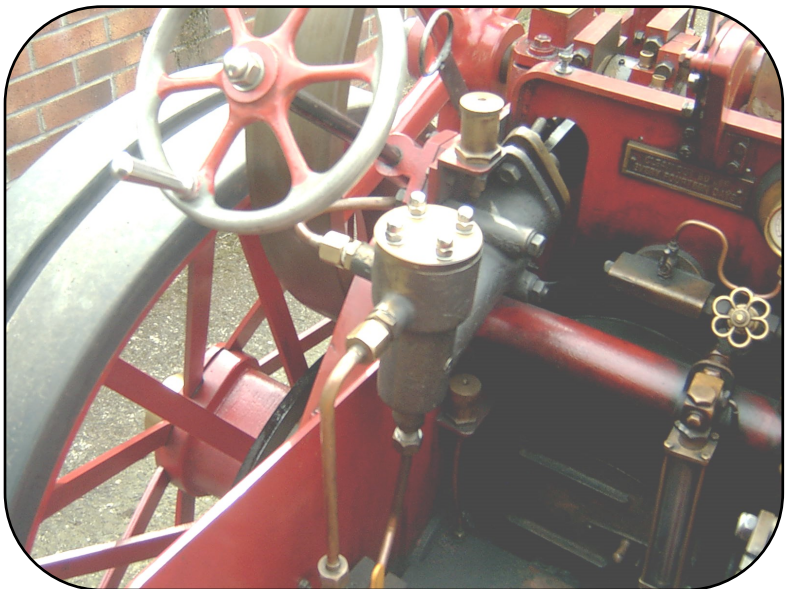
Castings used

- 6A38
- 6A39
- 6A44
- 6A45
- 6A74
- 6A77

6" Water Pump

Castings used

- 6A63
- 6A64
- 6A65



6" Brake Assembly

Castings used

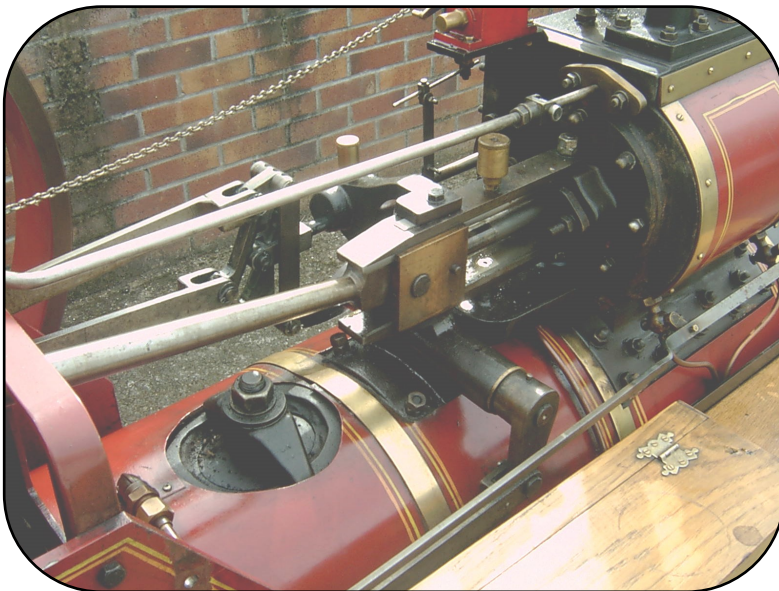
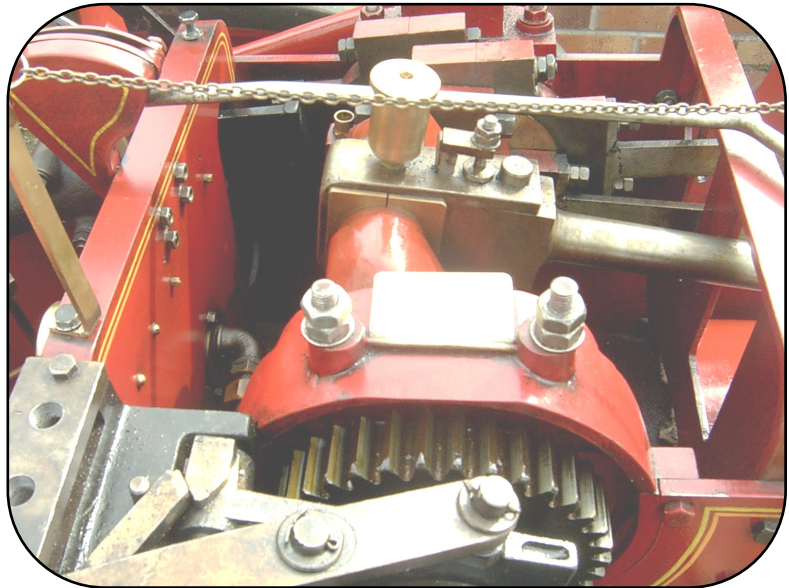
- 6A35
- 6A36
- 6A37
- 6A80

Detailed Image Gallery

6" Crank Shaft and Eccentrics Arrangement

Castings used

- 6A58
- 6A59
- 6A51
- 6A52
- 6A52
- 6A54



6" Motion Work and Cylinder Block

Castings used

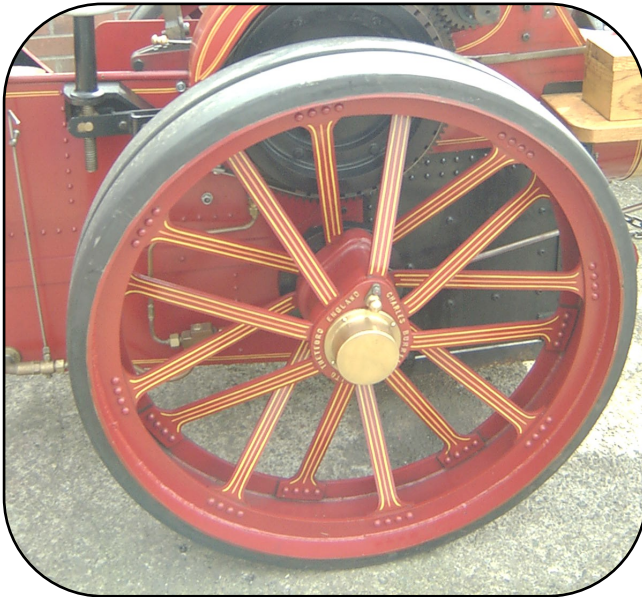
- 6A38
- 6A39
- 6A44
- 6A45

6" Accessories and Toolbox

These items are customisable but generally have a strong wooden shelf with toolbox and vice. The toolbox is the perfect item for holding those all essential tools and spare parts



Detailed Image Gallery



6" Rear Wheel Detailing

Castings used

- 6A23
- 6A24
- 6A25
- 6A26
- 6A27
- 6A29

6" Front Axle Assembly

Castings used

- 6A1
- 6A2
- 6A3
- 6A4
- 6A5
- 6A6
- 6A7
- 6A8

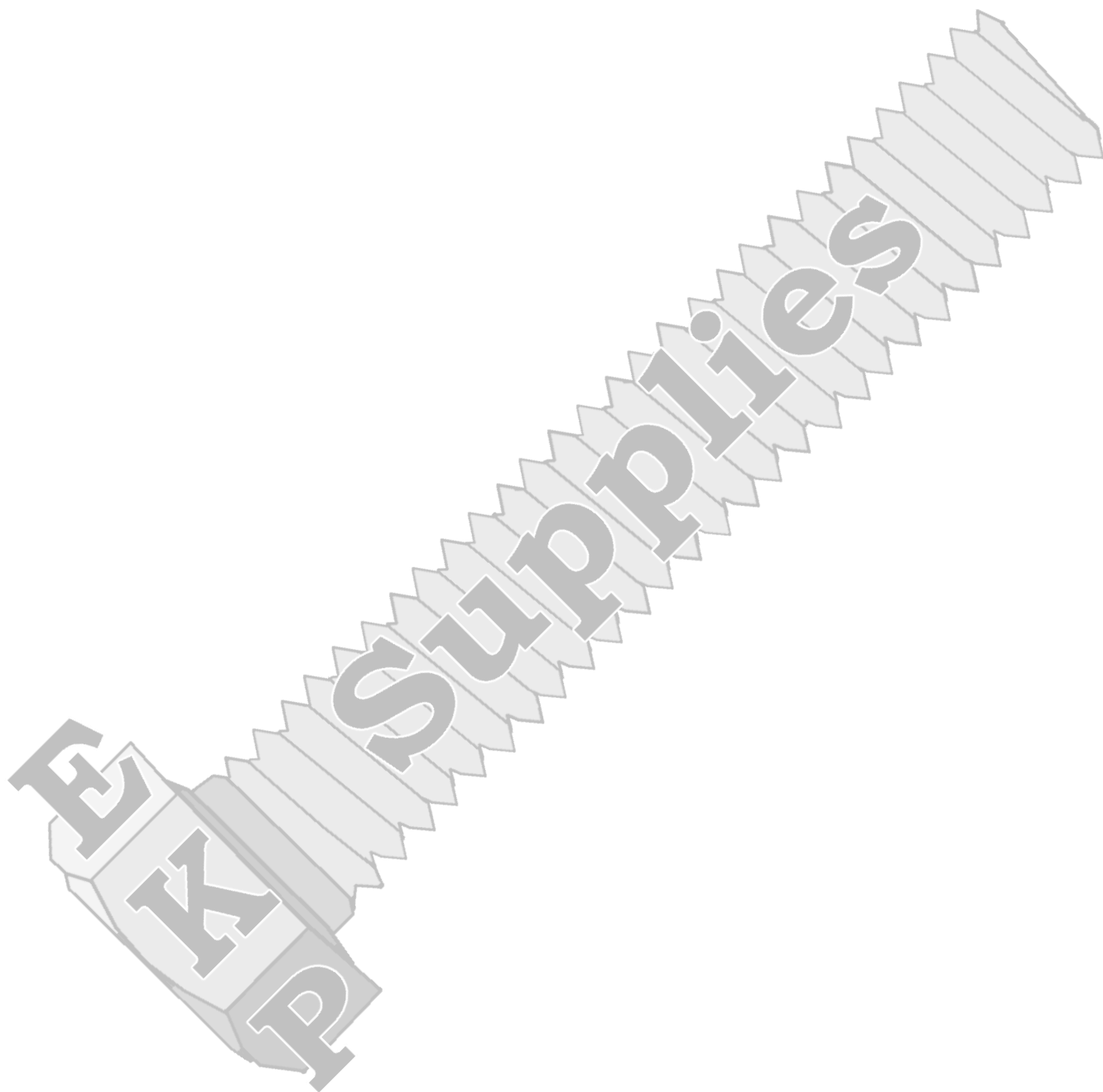


6" View from Tender

Castings used

- 6A60
- 6A61
- 6A62
- 6A66
- 6A67
- 6A70

Notes





PLEASE VISIT OUR WEBSITE WWW.EKPSUPPLIES.COM FOR A FULL RANGE OF:

MATERIALS
SCREWS
NUTS
WASHERS
FIXINGS
STEAM FITINGS
TOOLING
AND MUCH MORE

WE ARE ALSO ABLE TO OFFER BESPOKE FASTENINGS MADE TO ORDER FROM
QUANTITIES OF 500—50,000 IN EITHER:

STEEL
BRASS
PHOSPHOR BRONZE
STAINLESS STEEL



EKP Supplies
The Old Workshop
Bratton Fleming
Nr Barnstaple
EX31 4SA

WWW.EKPSUPPLIES.COM
SALES@EKPSUPPLIES.COM
01598 710 892